



Student Services



Annual School Committee Update - 2022-23 School Year



April 12, 2023



Tonight's Update



- *Thanks & Appreciation*
- *Special Education Data*
- *Out of District Enrollment*
- *Homelessness & Transportation*
- *Mental Health & Social Emotional Learning*
- *Core Programming & Best Practices*

Special Education Data

"IEP's and 504's are the antithesis of design. They represent the shortcomings of the model –not the child." (parent - 2020)



Special Education Student Percentages

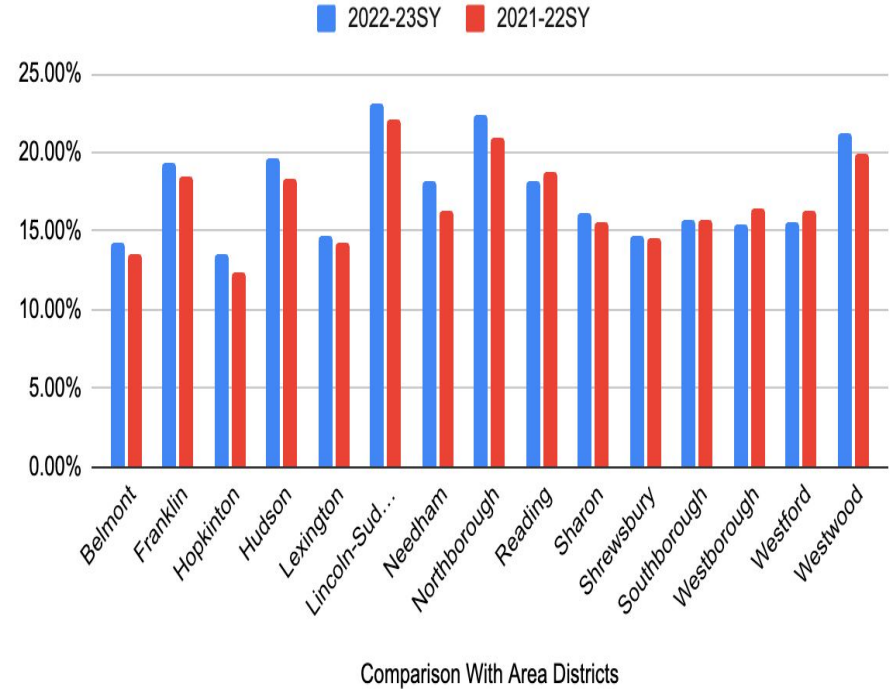
WPS Student Enrollment: 3931

WPS Students on IEPs: 640

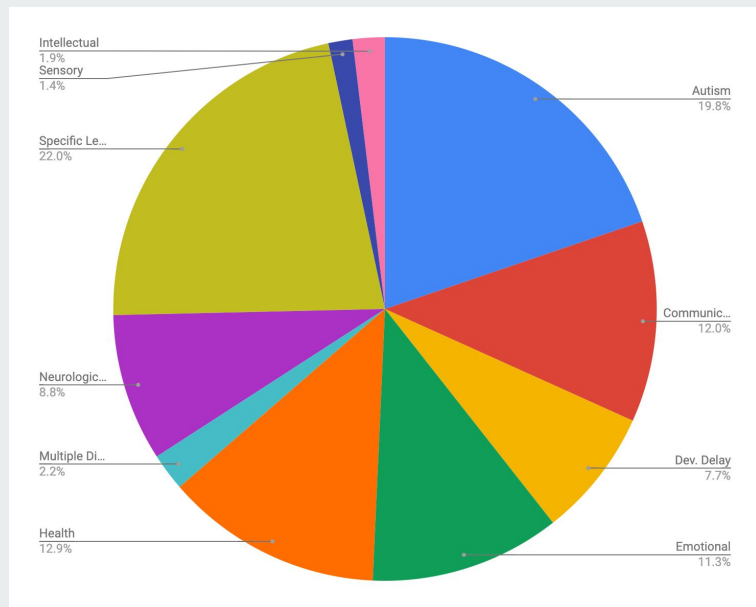
Westborough:16.3%

State:19.4%

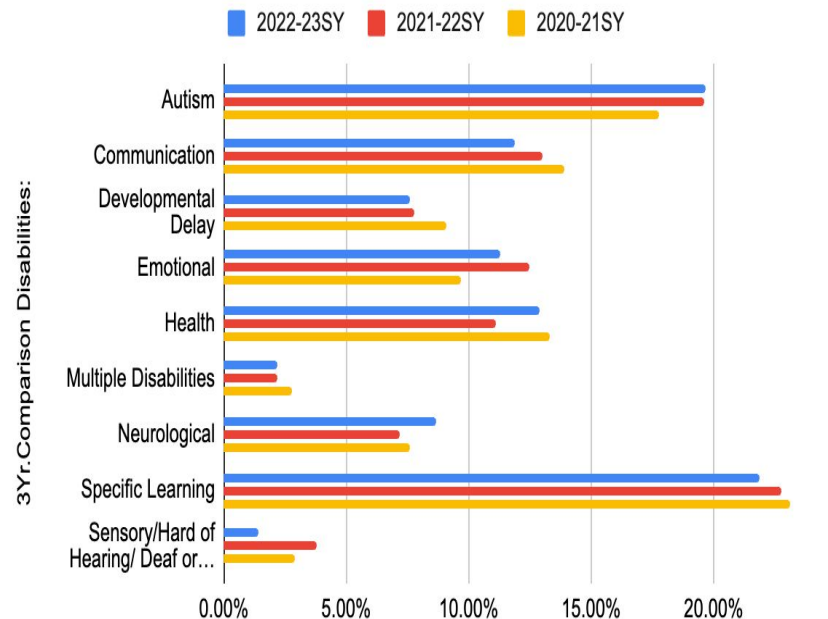
3Yr. Special Education Comparison With Area Districts



Disability Categories



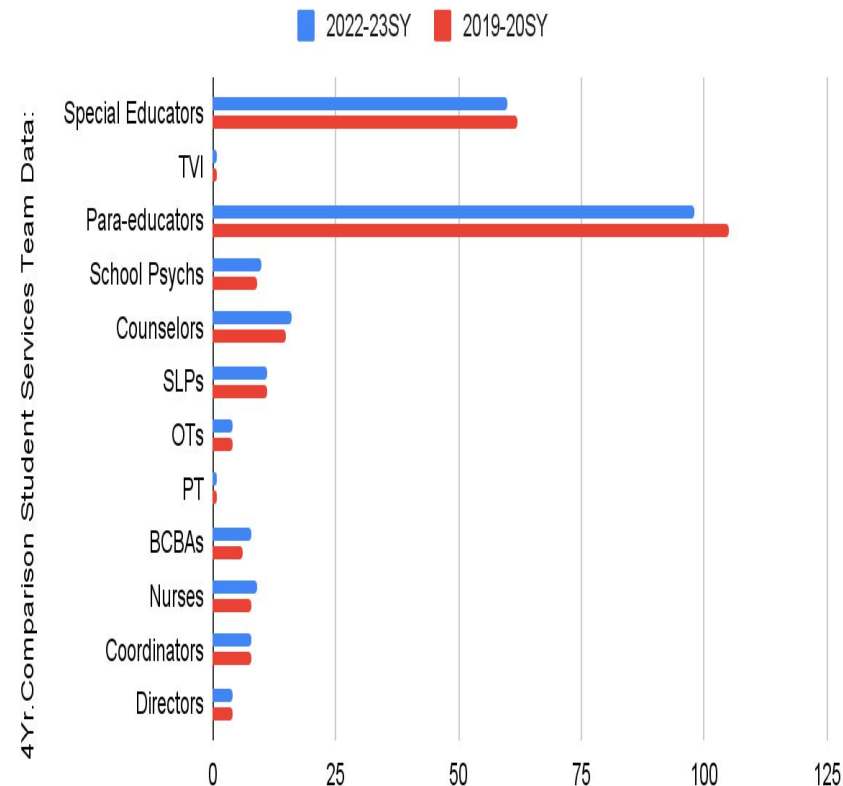
3 Year Comparison Special Education Students: Disability Categories



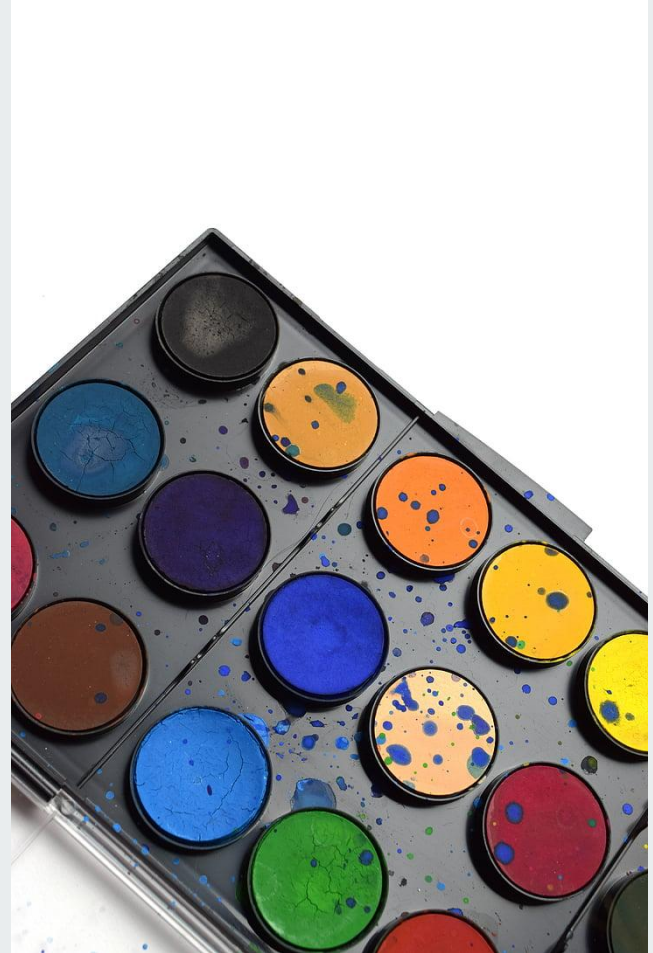
Student Services Team

"The strength of the team is each individual member. The strength of each member is the team." – Phil Jackson

4Yr. Comparison Student Services Team Staffing Data:



Out of District (OD) Enrollment - Homelessness & Transportation



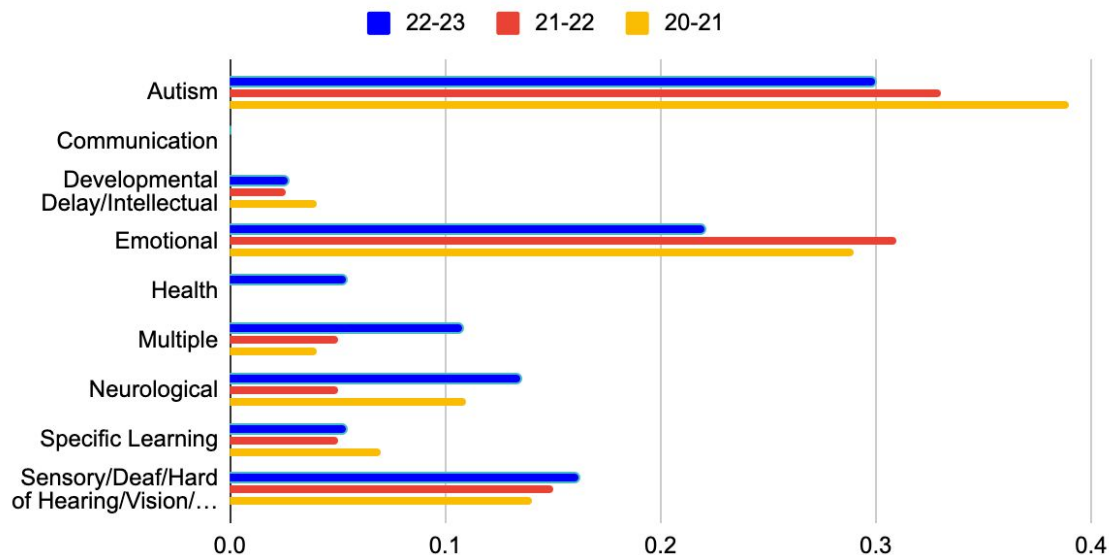


Total OD Students: 37

OD Trends and Predictions FY24

- Current Numbers
- Enrollment Shifts
 - Move ins/outs
 - Projections for Next Year
- Referral Challenges
- Operational Services Division (OSD) Increase 14%

Out-District: Disability Category Percentages 3 Year Comparison



Homelessness & Transportation

HOMELESSNESS

- State of the State
- Current Numbers
- Neighborhood School Distribution (K-3 equity)
- District impact
- State Grant Allocation
- Demand for Translations/Interpreters
- Coordination Effort: District and Community Resources and Partnerships

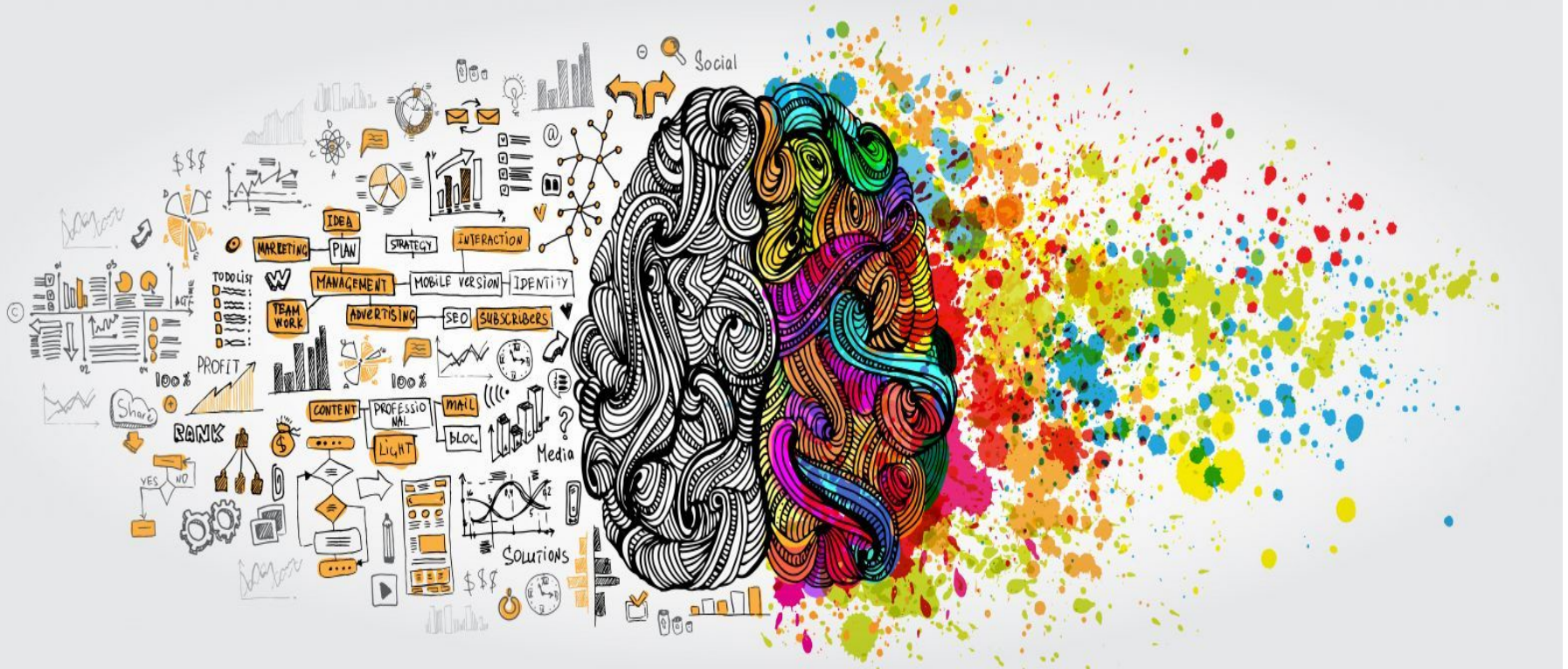


TRANSPORTATION

- Availability of Transportation -OD & NCLB
- Access to Specialized Transportation/Alternate Times
- Transportation Costs
- Limitations on Problem Solving
- Appreciation for Parents/Limits on Parents



Social Emotional - Mental Health: Learning + Wellness



WPS' Multi-Tiered System of Supports (MTSS): Promoting Student Engagement + Learning + Wellbeing





Social Emotional Learning Supports:

Top 20 SOFT SKILLS Employers Seek For Any Profession:

1. Time Management
2. Communication
3. Adaptability
4. Problem-Solving
5. Teamwork
6. Creativity
7. Leadership
8. Interpersonal Skills
9. Work Ethic
10. Attention to Detail

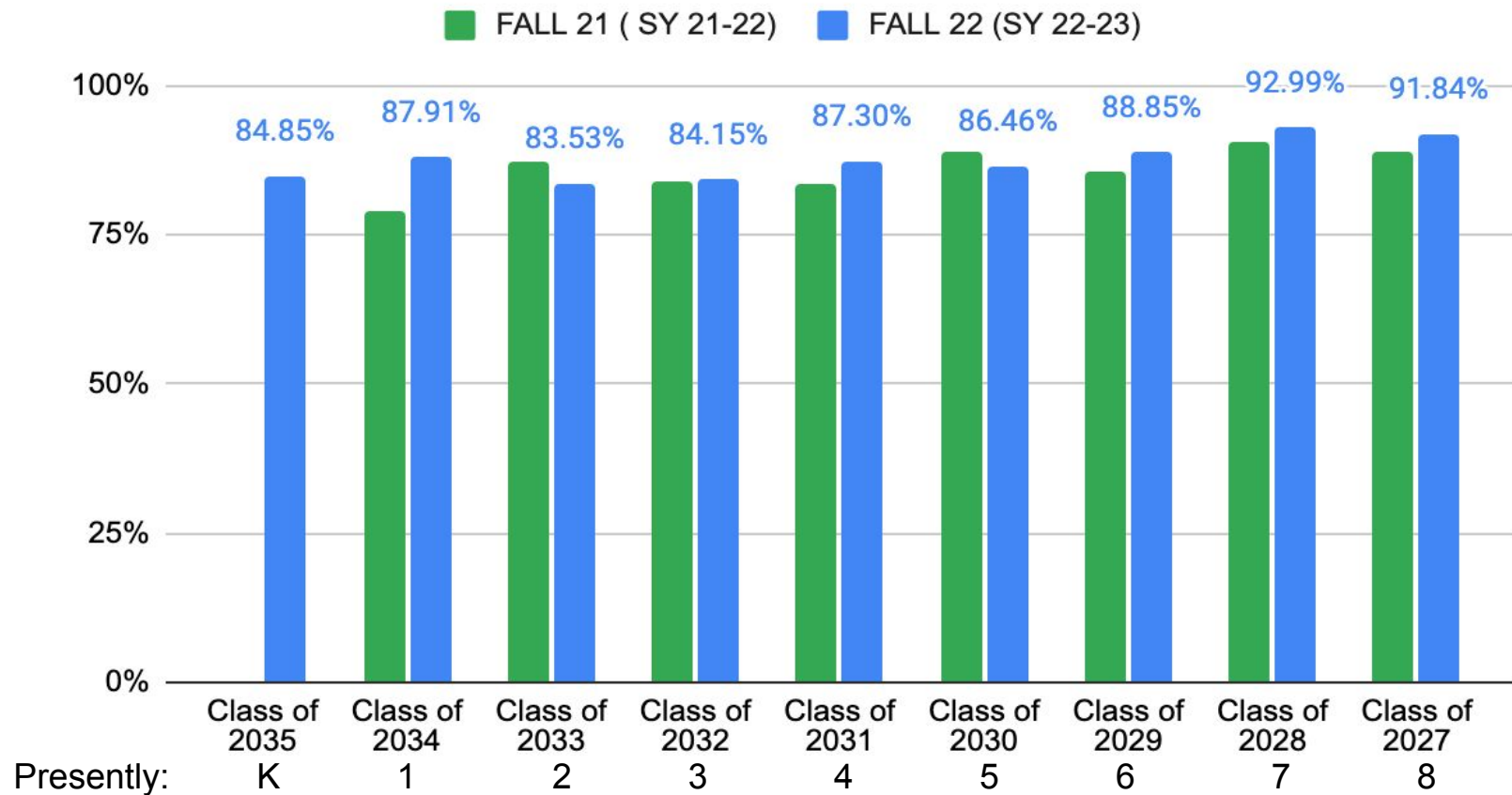
Top Skills Employers Are Looking For:

Dependability Teamwork/Collaboration

Flexibility

Problem Solving

Emergence of Universal Screening Longitudinal Data: Grades K-8 Students Screened in Normal Range



What Tier II | Targeted Support and Progress Monitoring looks like:

	UNIVERSAL SCREENING RESULTS			Progress Monitoring I			Progress Monitoring II		
	D	A	T	D	A	T	D	A	T
Student 1	Highly Elevated Score	Highly Elevated Score	Highly Elevated Score	Highly Elevated Score	Highly Elevated Score	Highly Elevated Score	Normal Range Score	Highly Elevated Score	Highly Elevated Score
Student 2	Highly Elevated Score	Elevated Score	Highly Elevated Score	Highly Elevated Score	Elevated Score	Highly Elevated Score	Highly Elevated Score	Normal Range Score	Highly Elevated Score
Student 3	Highly Elevated Score	Highly Elevated Score	Highly Elevated Score	Normal Range Score	Normal Range Score	Normal Range Score	Highly Elevated Score	Normal Range Score	Normal Range Score
Student 4	Elevated Score	Normal Range Score	Elevated Score	Normal Range Score	Normal Range Score	Normal Range Score	Normal Range Score	Normal Range Score	Normal Range Score
Student 5	Highly Elevated Score	Highly Elevated Score	Highly Elevated Score	Highly Elevated Score	Highly Elevated Score	Highly Elevated Score	Highly Elevated Score	Highly Elevated Score	Highly Elevated Score
Student 6	Elevated Score	Elevated Score	Elevated Score	Normal Range Score	Normal Range Score	Normal Range Score	Normal Range Score	Normal Range Score	Normal Range Score
Student 7	Elevated Score	Highly Elevated Score	Highly Elevated Score	--	--	--	Normal Range Score	Normal Range Score	Normal Range Score

- Highly Elevated Score
- Elevated Score
- Normal Range Score

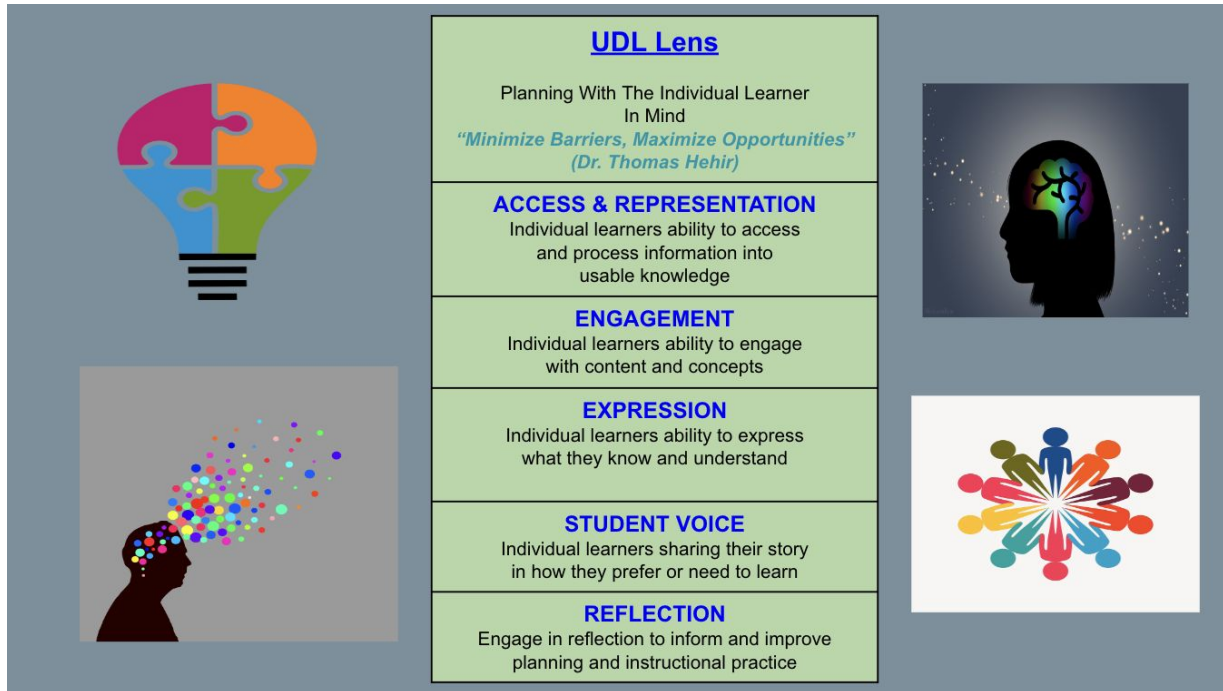


Best Practices & Core Programming Models



Universal Design for Learning (UDL)

Providing Access for ALL Learners



We can't prevent all the challenges students will face, but we can help to alleviate them by designing a learning environment that leaves no room for failure - Katie Novak



- Multi Tiered Support System (MTSS-Tiers I-III)
 - Array of interventions and support
- Flexible Student Centered Models
 - Westborough Early Childhood Center Program Design (fully Inclusive Prek Model)
 - Center for Student Success
 - Therapeutic
 - Intensive
 - Inclusion/Co-Taught/Sub-separate
 - The Bridging Over to Right Opportunities BORO Program
- Engagement with expert consultants
- Program Evaluations
- DESE
 - Tiered Focused Monitoring Review (mid-cycle-2023-24 School Year)
 - New IEP model (Fall 2024)
- Diverse & Talented Team of Student Services Professionals

Questions

